

Bermad Hydrometers



Bermad hydrometers

The **BERMAD** hydrometer is a combination of a water meter and a control valve accommodated in a single housing. The diaphragm-actuated valve provides the simple ON/OFF service as well as various regulating functions. The water meter, based on the Woltman principle, supplies pre-set quantities of water, regardless of pressure or flow fluctuations, and then shuts off automatically.

Product features:

- A volume of water is measured instead of a time to supply an exact amount of water.
- Internal provisions eliminate the need for straight pipes before and after the meter.
- Total flow meter and flow indicators.
- The control valve works on system pressure and is not dependent on an external power source.
- Can be installed horizontally as well as vertically.
- Integrated water meter and control valve require only minimal installation space.
- User-friendly design allows easy in-line inspection and maintenance.

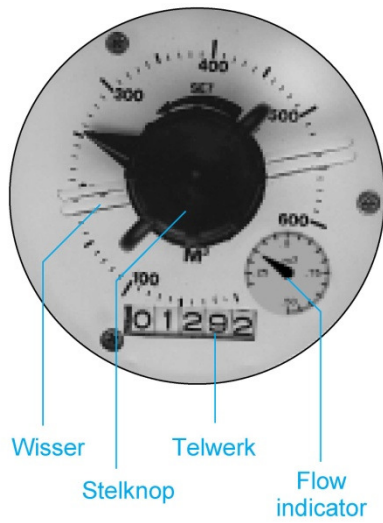




Hydrometers Technical Data

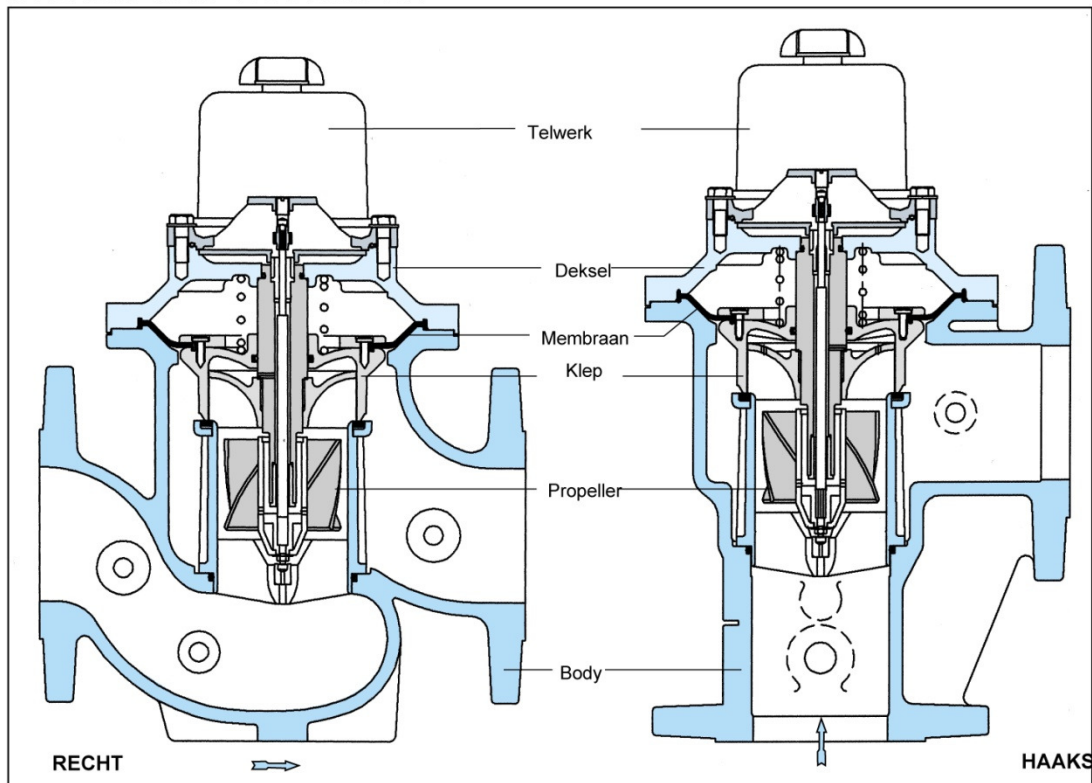
Specifications:

Model: straight or angled; 1½", 2" & 3"R: BSP, 3", 4", 6" & 8": ISO-fl.
 Working pressure: up to 10 bar (option: 16 bar)
 Temperature: water up to 50°C
 Materials: body + cover: cast iron (polyester-coated)
 internal components: plastic, stainless steel, and brass
 Diaphragm: nylon-reinforced NR (natural rubber)
 Seals: Buna-N and NR (natural rubber)



	Instel Capac. in m ³	Instel Verdeling in m ³	
4" - 6" - 8"	4	0.1	1½" - 2" - 3" - 3"R
	12	0.2	
	40	1	
	80	1	
	120	2	
	150	2	
	200	5	
	350	10	
	600	10	
	800	10	
	1200	20	
	2100	50	
	3500	100	
	6000	100	
	8000	100	
	12000	200	

HYDROMETER - DOORSNEDE



Subject to changes and/or typo errors