

Flow limiters



Flow limiters

The **Bermad** flow limiters come in the form of an adapter or a metal flange with, according to size, an appropriate number of modulating orifices. These openings are made of a special synthetic rubber composition and have been calibrated to guarantee a constant capacity. By combining several modulating orifices, which have a known capacity, it is possible to obtain the exact capacity required.

Product features:

Simple construction – no moving mechanical parts

Accurate flow control – superior to $\pm 15\%$

Maintenance-free

Easy to install

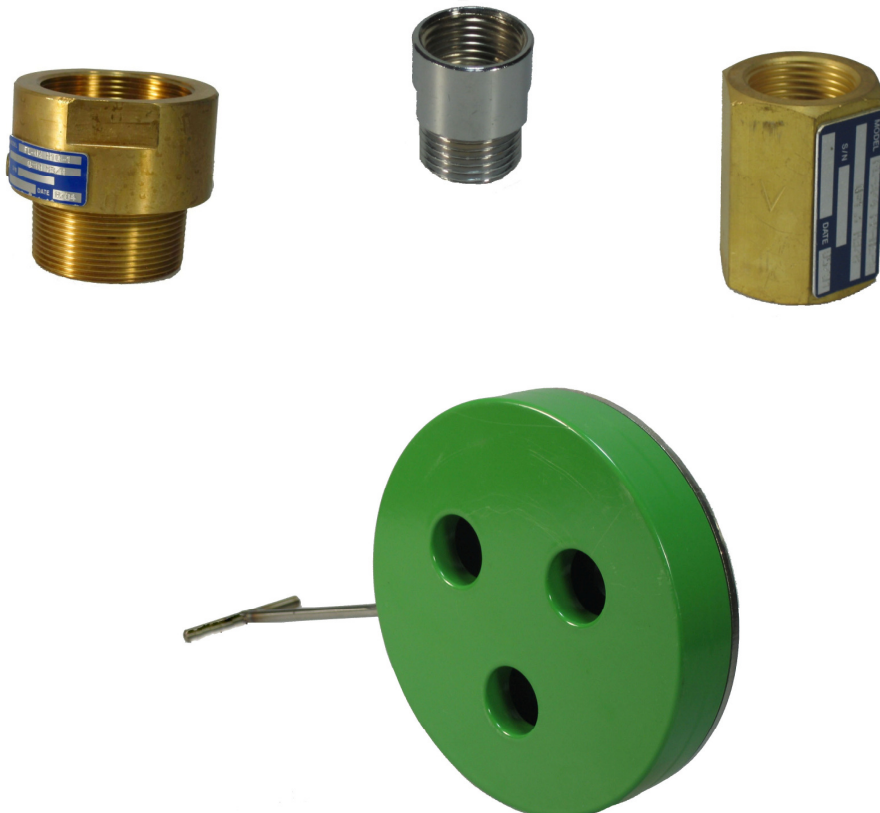
Adjusting the capacity by simply changing the modulating orifices

The flow limiter can be installed horizontally as well as vertically.

Strong non-corrosive structure.

Working:

The flow limiter maintains a constant capacity regardless of changing system pressures and/or demand. This effect is achieved by the contractions in the passage of the calibrated modulating orifice under the influence of the differential pressure on the orifices.



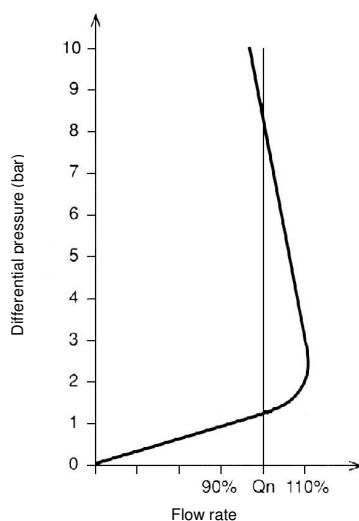


Flow limiters Technical Data

Specifications:

Materials: Flange type body: zinc-plated steel St.1.117 (other materials possible)
Adapter type body: brass (other materials possible)
Elastomer: high-quality compounded synthetic rubber, can endure aging and wear, and with excellent elastic characteristics.
Pressure range: up to 16 bar
Temperature: up to 40°C

Flow diagram:



Capacities flow limiters:

1/2" – 2" adapter type – brass, female/male thread connection

- 1/2" : 0.23 – 0.34 – 0.45 – 0.51 – 0.78 m³/h
- 1/2" : 0.23 – 0.34 – 0.45 – 0.51 – 0.78 m³/h
- 1" : 2.3 – 2.7 – 3.4 – 4.5 – 5.7 – 6.8 m³/h
- 1 1/2" : 2.3 – 2.7 – 3.4 – 4.5 – 5.7 – 6.8 m³/h
- 2" : 10 – 15 – 20 – 25 m³/h

1 1/2" – 8" flange type - zinc-plated steel/rubber type G:

- 1 1/2" : 1-3 rubbers 2.3-20 m³/h
- 2" : 1-4 rubbers 2.3-27 m³/h
- 3" : 1-7 rubbers 2.3-47 m³/h
- 4" : 1-9 rubbers 2.3-61 m³/h
- 6" : 1-20 rubbers 2.3-136 m³/h
- 8" : 1-35 rubbers 2.3-238 m³/h

3" – 16" flange type - zinc-plated steel/rubber type H:

- 3" : 1-3 rubbers 10-75 m³/h
- 4" : 1-4 rubbers 10-100 m³/h
- 6" : 1-8 rubbers 10-200 m³/h
- 8" : 1-14 rubbers 10-350 m³/h
- 10" : 1-21 rubbers 10-525 m³/h
- 12" : 1-29 rubbers 10-725 m³/h
- 14" : 1-37 rubbers 10-925 m³/h
- 16" : 1-44 rubbers 10-1100 m³/h



Subject to changes and/or typo errors