

Sand/Media Filters



Advantages of sand-bed filtration:

Large dirt/waste-retaining capacity. Deep filtration. Simple and constant action with good results. Filtering out of suspended solids. Durability of the filter material.

Advantages of UDI®:

The strength of steel and the resistance of plastic jointly allow a wide range of applications.. In this respect high working pressures (up to 8 bar) do not constitute an obstacle.

The **UDI®** sand filter has a filter bottom with removable mushroom diffusers. The sand bed is completely utilized. This effectively prevents dirt/waste inclusions. Perfect backwashing is possible in which all dirt/waste captured is washed out of the filter media. The filter is provided with enough manholes to easily enable inspections and sand changes to be carried out.

UDI® high-bed (multi)media filters have a filter bottom with removable mushroom diffusers. The raised filter bed results in more contact time with the medium and so provides the possibility of realizing increased capacities. In addition, it is possible to use more layers as a filter medium, which increases capacity and/or enhances quality. These special filters are provided with enough manholes to easily enable inspection or changing charges of filter material.

The **UDI®** horizontally-disposed sand filter has two rows of mushroom diffusers mounted on a low-lying central pipe. This results in a fairly thick filter bed which has a relatively large surface.

All models can be modularly joined, in conjunction with appropriate flush valves, to form units of any shape and capacity and for continuous service. To this end a comprehensive range of fittings, connectors and rapid couplings of the same make is available.

Coating:

In preparation for the coating, the filters are provided with a special layer of zinc phosphate. This treatment ensures proper adhesion of the coating and protects against rusting through from the inside.

The polyester coating is subsequently applied electrostatically, both internally and externally, before being furnace-hardened. The whole process involves 7 steps, and results in a perfect coating having a thickness of approx. 100 microns.



Sand-/media filters series 4000 (small) Technical Data

Description:

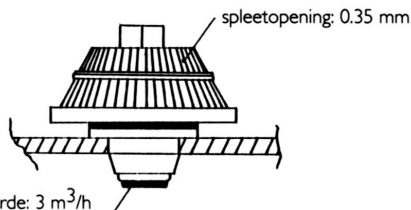
Vertical cylinder with filter bottom standing on ring foot or multiple feet.

Applications:

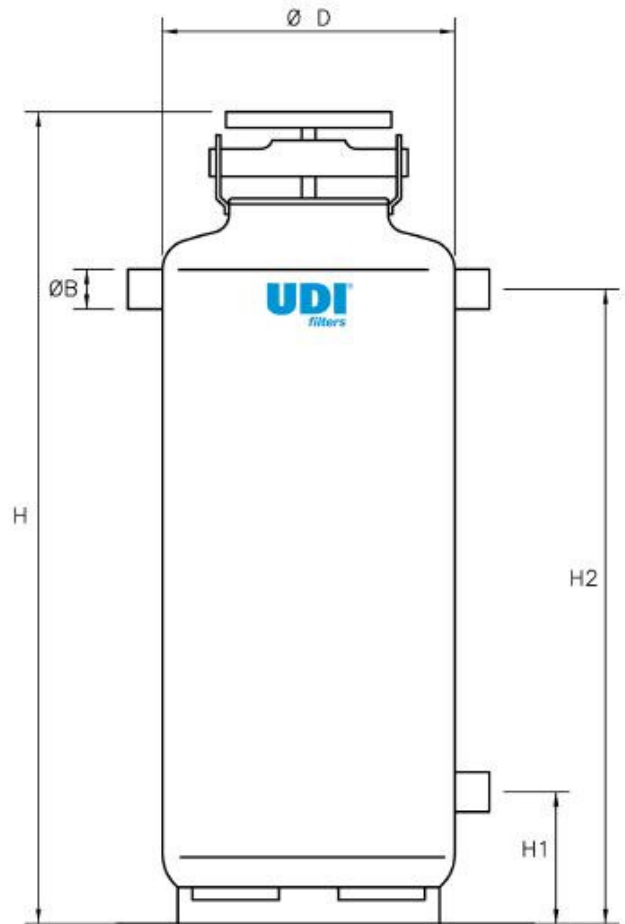
- Prefiltration of disinfection equipment
- Prefiltration for micro and ultrafiltration
- Re-circulation systems
- Cooling-water processes
- Irrigation systems
- Swimming-pool filtration
- Basin water filtration
- Groundwater purification

Materials:

- Polyester coated steel
- Neoprene rubbers
- Polypropylene mushroom diffusers



KV-waarde: 3 m³/h



Type	Unit	4U4121	4U41615	4U4202	4U4242
Diameter D	inch	12"	16"	20"	24"
Capacity	m ³ /h	3,5	6,5	10	14
Connection B	inch	1"	1,5"	2"	2"
H	mm	1200	1200	1200	1330
H 1	mm	165	180	180	245
H 2	mm	865	870	880	935
Weight	kg	42	50	70	90
Mushroom diffusers		6	8	14	20
Filter-bed height	cm	45	45	45	45
Filter media (sand)	kg	50	75	125	200
Filter media	liter	30	55	90	130
Manholes		1 * 6"	1 * 8"	1 * 8"	1 * 8"
		1 * 4"	1 * 4"	1 * 6"	1 * 6"
Feet		ring	ring	ring	feet
Working pressure	bar	8	8	8	8
Max. pressure	bar	10	10	10	10

Sand-/media filters series 4000 (large) Technical Data



Description:

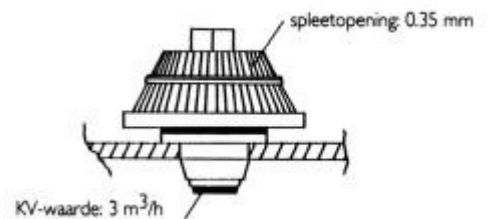
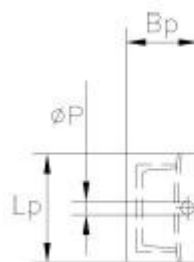
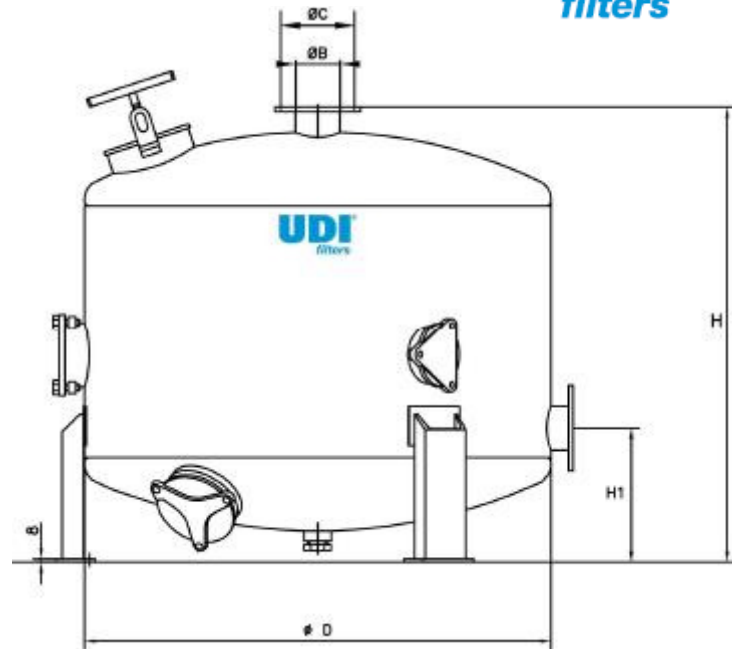
Vertical cylinder with filter bottom standing on feet.

Application:

- Prefiltration of disinfection equipment
- Prefiltration for micro and ultrafiltration
- Re-circulation systems
- Cooling-water processes
- Irrigation systems
- Swimming-pool filtration
- Basin water filtration
- Groundwater purification

Materials:

- Polyester coated steel
- Neoprene rubbers
- Polypropylene mushroom diffusers



Type	Unit	4U43025	4U4363	4U4423	4U4484	4U4604
Diameter D	inch	30"	36"	42"	48"	60"
Capacity	m ³ /h	22	32	45	58	90
Flange (ISO 7005 PN 16)						
Connection B	inch	2,5"	3"	3"	4"	4"
Diameter	mm	185	200	200	220	220
Bolt circle dia. C	mm	145	160	160	180	180
Holes	mm	4*Ø18	8* Ø18	8* Ø18	8* Ø18	8* Ø18
H	mm	1070	1085	1100	1180	1470
H 1	mm	310	320	335	345	510
Weight	kg	135	185	250	310	450
Mushroom diffusers		31	42	58	72	106
Filter-bed height	cm	40	40	40	40	40
Filter media (sand)	kg	250	375	500	650	1000
Filter media	liter	180	260	350	450	700
Manholes		1 * 8" 2 * 6"	1 * 8" 2 * 6"	1 * 8" 3 * 6"	1 * 8" 3 * 6"	2 * 8" 4 * 8"
Legs		3	3	3	3	4
Lp	mm	110	110	150	150	150
Bp	mm	90	90	100	100	100
ØP	mm	18	18	18	18	18
Working pressure	Bar	8	8	8	8	8
Max. pressure	bar	10	10	10	10	10



Sand-/media filters series 9000 Technical Data

Description:

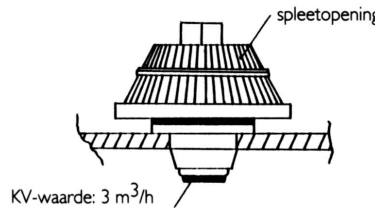
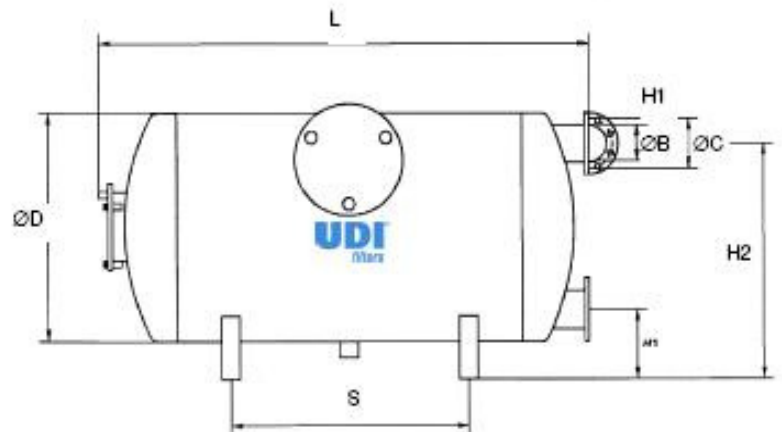
Horizontal cylinder with connections on one side.

Applications:

- Prefiltration of disinfection equipment
- Prefiltration for micro and ultrafiltration
- Re-circulation systems
- Cooling-water processes
- Irrigation systems
- Swimming-pool filtration
- Basin water filtration
- Groundwater purification

Materials:

- Polyester coated steel
- Neoprene rubbers
- Polypropylene mushroom diffusers



Type	Unit	4U9202	4U9243
Diameter	inch	20"	24"
Capacity	m ³ /h	22	32
Flange (ISO 7005 PN16)			
Connection B	inch	2,5"	3"
Diameter	mm	185	200
Bolt circle dia. C	mm	145	160
Holes	mm	4 * Ø 18	8 * Ø 18
H 1	mm	150	175
H 2	mm	490	635
L	mm	1160	1330
S	mm	555	730
Weight	kg	80	103
Mushroom diffusers		16	18
Filter-bed height	cm	10	15
Filter media (sand)	kg	150	250
Manholes		2 * 8"	2 * 8"
Working pressure	bar	8	8
Max. pressure	bar	10	10