

Cyclone Filters



Advantages of UDI® cyclone filters:

Using hydrocyclones, parts of dirt with a high specific gravity can be filtered out quite effectively. The liquid is admitted tangentially, which results in a centrifugal flow forcing the dirt parts towards the outer side of the filter. Thereupon the dirt is carried downwards to the collecting tank. The water thus freed from the heavy parts arrives at the centre of the spiral and leaves the filter at the top.

The large diameter of UDI® cyclone filters makes it possible to generate, at a low differential pressure, sufficient flow energy to adequately separate the heavy parts. In view of the minimal loss of pressure, the filter can be included in-line in existing installations.

Cyclone filters can be made of stainless steel and/or provided with an inlay (wearing surface, e.g. vulcanized rubber) upon request.

Coating:

In preparation for the coating, the filters are provided with a special layer of zinc phosphate. This treatment ensures proper adhesion of the coating and protects against rusting through from the inside.

The polyester coating is subsequently applied electrostatically, both internally and externally, before being furnace-hardened. The whole process involves 7 steps, and results in a perfect coating having a thickness of approx. 100 microns.



Cyclone filters series 5000

Technical Data

Description:

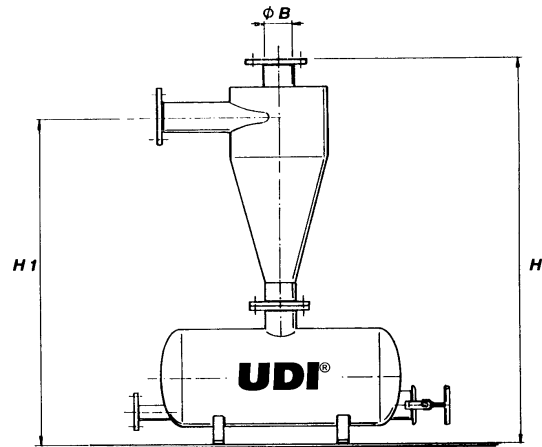
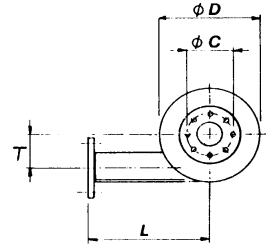
Upright cyclone filter with collection cell fitted underneath.

Applications:

- Groundwater filtration
- Rinsing vegetables
- Fish processing industries
- Separation processes
- Cooling-water systems

Materials:

- Polyester coated steel
- Neoprene rubbers



Type	Unit	50307	50410	50615	50820	50830	51243	51640	52060	52460
Connection B	inch	¾"	1"	1,5"	2"	3"	1¼"/uit3"	4"	6"	6"
Capacity	m³/h	2-3,5	3,5-7,5	7,5-12	11-17	18-34	35-52	52-82	98-160	140-230
Diameter D	inch	3"	4"	6"	8"	8"	12"	16"	20"	24"
Flange (ISO 7005 PN16)										
Bolt circle dia. C	mm	-	-	-	-	160	180,160	180	240	240
Bolt holes	mm	-	-	-	-	8*Ø18	8*Ø18	8*Ø18	8*Ø22	8*Ø22
Bottom connection	inch	1" thr.	1" thr.	3" Vic	3" Vic	3" Vic	6" Fl.	6" Fl.	8" Fl.	8" Fl.
Volume collection cell	ltr	2	2	10	10	10	60	120	220	220
Drain connection	inch	½" thr.	½" thr.	1" thr.	1" thr.	1" thr.	2" thr.	3" Fl.	3" Fl.	3" Fl.
H	mm	400	460	720	735	830	1330	1720	1900	2155
H1	mm	320	380	580	575	660	1130	1480	1610	1860
T	mm	32	40	61	80	65	105	145	170	220
L	mm	120	140	240	295	300	500	600	600	600
Weight	kg	8	9	18	20	27	66	125	172	205
Working pressure	bar	8	8	8	8	8	8	8	8	8
Max. pressure	bar	10	10	10	10	10	10	10	10	10
ΔP	bar	0,2-0,5	0,2-0,9	0,2-0,5	0,2-0,5	0,2-0,5	0,2-0,5	0,2-0,5	0,2-0,5	0,2-0,5