

# Hydrometer



## Hydrometers

The **Bermad** hydrometer is a combination of a valve and a water meter accommodated in a single housing. The (diaphragm-actuated) valve can be provided with both open/closed and various regulating functions, such as: pressure-reducing, pre-pressure-sustaining and flow or level control. The water meter delivers, regardless of pressure or flow fluctuations, the manually preset quantity of water and then shuts off automatically.

### Features:

- A volume of water is measured and not a time to give an exact amount of water.
- Internal flow straighteners eliminate the need for straightening distances, enables vertical or horizontal installation.
- Total flow meter and flow indicator.
- The control valve works on system pressure and is not dependent on an external power source.
- Integrated water meter and control valve requires only minimal installation space.
- User-friendly design allows easy in-line inspection and maintenance.

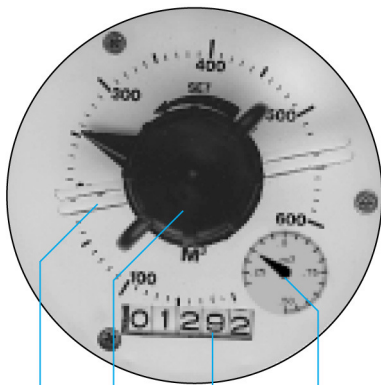




# Hydrometer Technical Data

### Specifications:

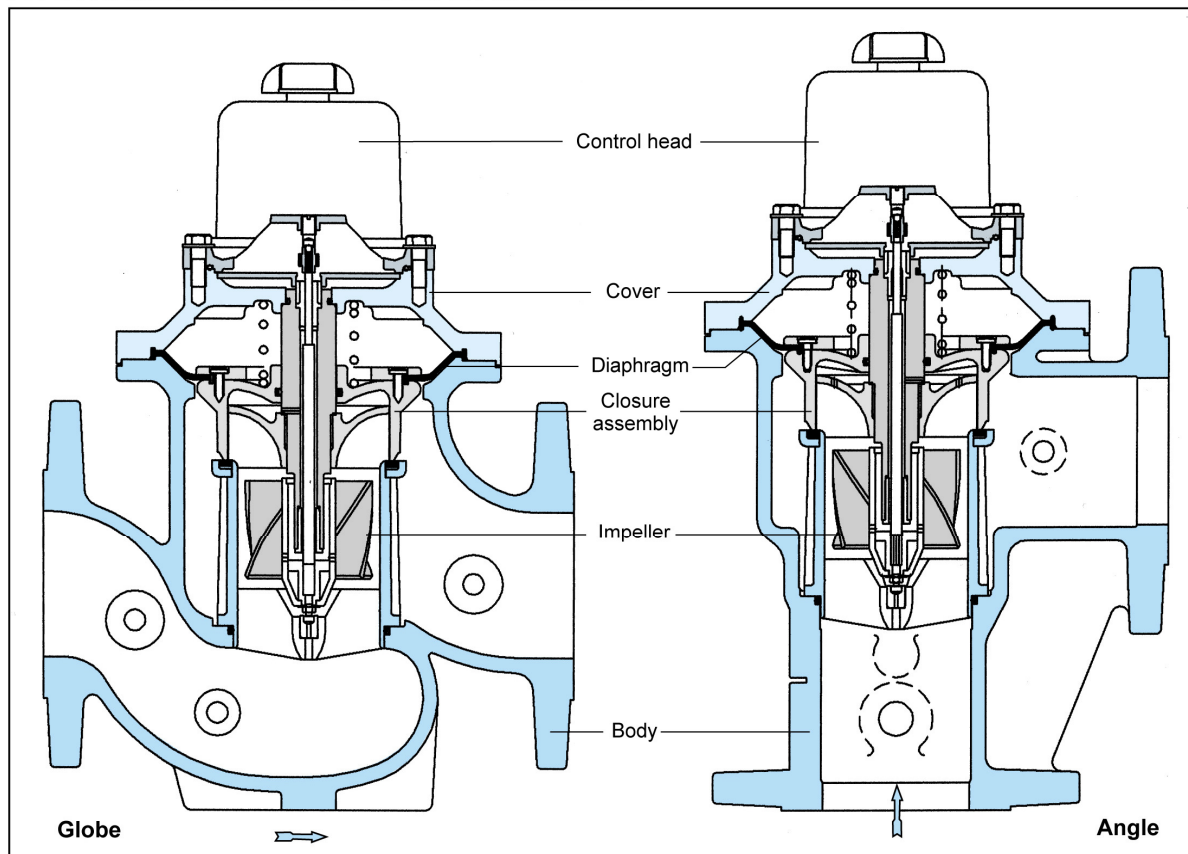
Model: straight or angle-patterned; 1½", 2" & 3"R: BSP, 3", 4", 6" & 8": ISO-fl.  
 Working pressure: up till 10 bar (option: 16 bar)  
 Temperature: water up till 50° C  
 Materials: body + cover: cast iron (polyester coated)  
 internal components: plastic, st.st. & brass  
 Diaphragm: with nylon reinforced NR (natural rubber)  
 Seals: Buna-N and NR (natural rubber)



Wiper  
 Register  
 Setting knob  
 Flow indicator

	Dial Capacity m <sup>3</sup>	Scale Graduation m <sup>3</sup>	
	4	0.1	1½" - 2" - 3" - 3"R
	12	0.2	
	40	1	
	80	1	
4" - 6" - 8"	120	2	1½" - 2" - 3" - 3"R
	150	2	
	200	5	
	350	10	
	600	10	
	800	10	
	2100	50	
	3500	100	
	6000	100	
	8000	100	
	12000	200	

## HYDROMETER - BASIC VALVE ASSEMBLY



UVAR

Subject to changes and/or improvements