



# Watermeter

## Technical data

### Specifications:

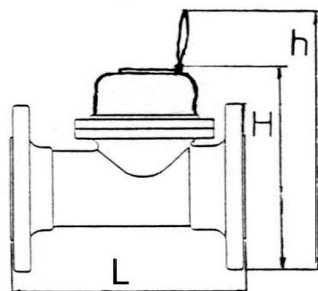
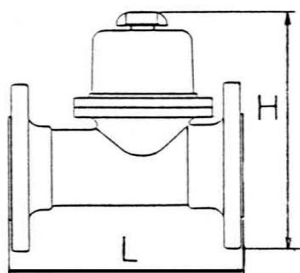
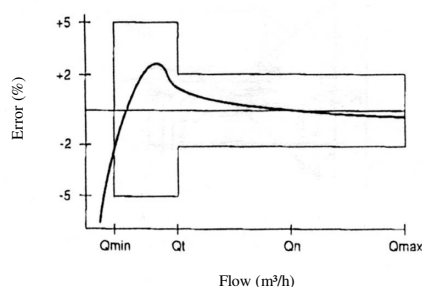
Size: NW 80 FL connection ISO-PN10 and BST-D  
 Working pressure: 0,5-10 bar  
 Material: - body: Polyester Coated Ductile Iron  
 - mechanism: Stainless Steel and Plastic  
 Seals: NBR (Buna-N)

### Capacities, dimensions and weights:

Version	Unit	3"	3"MD
Connection ND	inch	3"	3"
DN	mm	80	80
Nominal flow $Q_{nom}$	m <sup>3</sup> /h	65	65
Maximum flow $Q_{max}$	m <sup>3</sup> /h	80	80
Maximum flow (Peak)	m <sup>3</sup> /h	130	130
Transitional flow $Q_t$	m <sup>3</sup> /h	12	8
Minimum flow $Q_{min}$	m <sup>3</sup> /h	3.2	3.2
Flow at $\Delta P=0,1bar$	m <sup>3</sup> /h	60	60
Flange ISO PN10	mm	146/160	160
Build in length L	mm	230	230
Height H	mm	285	260
Height h	mm	---	330
Width W	mm	200	200
Weight	kg	4.6	5.5

Complies with ISO4064 class B, EEC

### Metrologic curve:



		1 pulse per	Opto puls
3"	ltr	5, 10, 20	Lower gear 3 x 100
	ltr	50, 100	Lower gear 3 x 1
3" M.D.	ltr	10, 100, 1000	1 op 1

### Read-contact:

Switching voltage: 48 VAC/DC max  
 Switching current: 0,2 A max  
 Switching power: 4 W max

### Opto-electric sensor:

Supply voltage: 5-10 VDC  
 Output type: complementary  
 Output current: 200 mA



Subject to changes and/or misprints